



# WASHINGTON STATE

S O C C E R

---

NATIONAL SIGNING DAY 2015





## 2015 WSU COUGAR SOCCER SIGNEES

NAME	POSITION	HIGH SCHOOL	CLUB	HOMETOWN
Emma Dahline	Goalkeeper	Henry M. Jackson High School	Crossfire Premier	Mill Creek, Wash.
Tia Gavin	Forward	Narara Valley High School	Western Sydney Wanderers	Sydney, Australia
Liz Griffith	Midfield	Puyallup High School	Washington Premier FC	Puyallup, Wash.
Grace Hancock	Defender/Midfield	Boise High School	FC Nova	Boise, Idaho
Maddy Haro	Midfield/Forward	Santiago High School	Legends FC	Corona, Calif.
Maegan O'Neill	Midfield/Defender	Joel E. Ferris High School	Spokane Shadow	Spokane, Wash.
Abbey Porter	Defender	Skyline High School	Eastside FC	Sammamish, Wash.
Julia Reneau	Goalkeeper	Laurel Springs High School	Pleasanton Rage	Ojai, Calif.
Shay Whieldon	Midfield	Upland High School	Legends FC	Upland, Calif.







# EMMA DAHLINE

Goalkeeper

Henry M. Jackson High School  
Mill Creek, Wash.

## WHAT THEY'RE SAYING...

"Emma is committed to being the best GK that she can possibly be. She is dedicated to her training and team. She is one of the most competitive players I have ever coached, and will do anything to win."

—Justi Baumgardt-Yamada, Head Coach  
Crossfire Premier ECNL

"I chose to attend WSU to play soccer not only because the campus is beautiful, but because I have the opportunity not only to compete in the classroom, but to compete in one of the toughest conferences in Division I Athletics as well. I am excited to be a part of a great program that instills discipline and teamwork. Go Cougs!"

—Emma Dahline

## HIGH SCHOOL

Two-year letterwinner...All-Wesco South First Team on defense as a freshman and sophomore...team captain as a sophomore...Wesco champions during freshman season...reached state playoffs both years...four-year member of the honor roll...attended leadership conference as a sophomore.

## CLUB

Member of Crossfire Premier...played for coach Justi Baumgardt...third nationally as a U15...qualified for national playoffs in U16 and U17 seasons.





# TIA GAVIN

Forward

Narara Valley High School  
Sydney, Australia

## WHAT THEY'RE SAYING...

"Tia Gavin is an exciting young player from Australia. Having represented her country at Junior level, her hard work ethic has seen her graduate from the National Training Centre program to play in last seasons W-League with Western Sydney Wanderers. Tia is an explosive striker that works hard for her team. Her ability to position herself to create scoring chances is second to none and I'm sure with guidance from Steve Nugent and his staff and the program at Washington State she will excel and become a better person and player."

—Jaime Gomez

"I chose WSU because of the unique school spirit and excellent reputation for women's soccer. With reference from other Australian student athletes who attended WSU and coaches, I have heard it is the perfect college experience. With such amazing people surrounding you, it is the perfect environment to grow and develop as a person, player and teammate. Very excited to be a Cougar!"

—Tia Gavin



## HIGH SCHOOL

Played four-years as a prep...team captured state title in 2014...team's leading scorer as a striker...all-state team, 2012-14.

## CLUB

Member of Australian U-17 National Team, 2012-14...member of Western Sydney Wanderers (W-League) in 2014...top five goal scorer in NSW Women's Premier League in 2014 as team captured league title.







# LIZ GRIFFITH

Midfield

Puyallup High School

Puyallup, Wash.

## WHAT THEY'RE SAYING...

"Liz is one of the most creative attacking soccer players I have coached at the youth level. Her ability to spin and twist out of pressure around the 18 yard box is outstanding! This combined with her high soccer IQ will make her a very successful player at the collegiate level."

—Seth Spidahl, Technical Director

"I chose to go to WSU because when I got to Pullman for the first time I fell in love with the campus and it's atmosphere! I am also excited to be able to have the chance at playing in the PAC 12. WSU is also far enough away from home where I am going away, but still close enough where I can go home if I needed to. I don't know for sure what I want to major in yet and WSU has a lot of different options if I change my mind. So pretty much WSU is the perfect school for me!"

—Liz Griffith

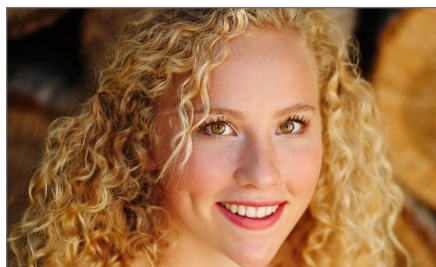
## HIGH SCHOOL

Three-year letterwinner for coach Matt White...WIAA All-State First Team, all-area first team and All-South Puget Sound League First Team in 2013...led state in assists during 2013 campaign...helped Vikings win 2012 league title and advance to state quarterfinal round.

## CLUB

Member of Washington Premier FC led by coach Seth Spidahl...ECNL National Flight B champions...captured three-consecutive league crowns, 2012-14.





## GRACE HANCOCK

Defender/Midfield  
Boise High School  
Boise, Idaho

### WHAT THEY'RE SAYING...

"I am excited to see Grace step onto Lower Field and the Washington State campus as she has always excelled with competition. From her days of training with our boys teams; performing bicycle kicks, diving headers and slide tackling with the best of them, she thrives on living life and playing the game to it's fullest. Both academically and athletically she is ready for this next step and knowingly moving into a higher level of play and learning with WAZZU. Grace has always been the 'dive in front of a bullet' type of teammate who will no doubt bring this attitude and effort to Pullman. Carrying on the tradition of continual improvement for the 'Cougs' and the staff at Washington State University. Grace has become a symbol for FCNova over the years and I have no worries she will become one for the women's soccer program and university. Good luck 'Gracie, 'G', Coach Nugent and the rest of staff at WAZZU. FCNova and Idaho will be watching with anticipation for things to come!

—Eric Simonsen, Dir. Of Coaching  
FC Nova

"Out of all the schools I visited while being recruited Washington State had something a little bit more special about it. The amount of loyalty and love the students have for their school is something I didn't see anywhere else. The team has also shown me that being a Cougar isn't just about reaching your potential on the field, but also as a person, which is something I will always strive for."

—Grace Hancock

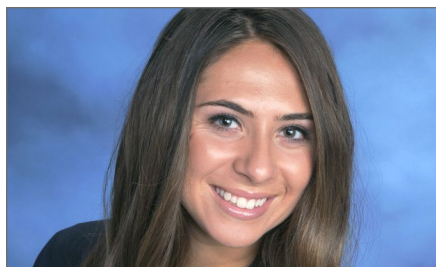
### HIGH SCHOOL

Four-year starter for coach Chris Siegenthaler...Southern Idaho Conference Second Team defender as a freshman...SIC First Team defender and Idaho All-State selection as a sophomore...team captain as a senior...team won District III and was a state finalist in 2011...state champions in 2013.

### CLUB

Member of FC Nova coached by Eric Simonsen...state runner-up in 2009 and 2010 before winning state titles in 2011 and 2012...won Far West Regional in 2011 and 2012...U17 Women's National Team pool in 2013...ODP Region IV Team, 2011-14 with championships 2012-14...US Youth Soccer National Player of the Month, March 2013.





# MADDY HARO

Midfield/Forward  
Santiago High School  
Corona, Calif.

## WHAT THEY'RE SAYING...

"The Cougars are getting a great left sided player. Maddy can play wing forward, wide in the midfield and leftback. If needed can play central. Great left foot with Pac 12 speed. Coach Nugent and his staff will be happy coaching this young lady just as I and the legends staff have."

—Jim Wain, Director  
Legends Soccer Club

"Ever since I was little, my parents always encouraged me to experience something different, something I wasn't used to, and when I came to Washington State I felt like it was where I belonged; everything about the campus, people, and the environment felt exactly right and nothing can compare."

—Maddy Haro

## HIGH SCHOOL

Four-year letterwinner for coach Mike Fleming...All-Big VIII selection in 2013 and 2014...three-time all-academic league choice from 2012-14...helped Sharks capture four-straight league titles and earn four-consecutive trips to the CIF quarterfinal round.

## CLUB

Played three-different positions for Legends (Calif.) FC under coach Jim Wain...selected to 2011 and 2013 ODP pool...club won 2012 USYS national title, 2013 and 2014 Region IV championships and 2014 National Cup crown.







# MAEGAN O'NEILL

Midfield/Defender  
Joel E. Ferris High School  
Spokane, Wash.

## WHAT THEY'RE SAYING...

"Maegan has been an outstanding player and leader for our team over the years. She has always been the player that has led by example and is everything a coach could hope for when it comes to effort. Maegan arrives at training focused and works hard at being better every day. Her determination and leadership is complemented by her compassion and love for her team. Maegan has a very good sense of when a teammate needs encouragement and is able to find ways to inspire others to be better without having to resort to a harsh tone. She is someone that we point to when looking for an example of who we want our younger club members to model themselves after. While we will miss her after she graduates we are excited for her to move on to the next level of soccer at Washington State University."

—Kevin Moon, Coach  
SSC Shadow

"The ultimate reason I chose WSU was because it feels like home and has the program that I want to study. I knew the second time I was able to visit the campus and spend time with the girls that I wanted to play with them in the future! WSU is the complete package for me—college programs and a fantastic soccer program with players and staff where I will grow!"

—Maegan O'Neill

## HIGH SCHOOL

Four-year letterwinner for coach Ron Evans...All-Greater Spokane League First Team defender in 2013...played basketball and participated in track & field for the Saxons...four-year member of the honor roll...National Honor Society...Key Club in 2014...Spokane Rotary Student-Athlete Award recipient in 2014.

## CLUB

Played for Spokane (Wash.) Shadow and coach Kevin Moon...team captain from 2008-11 and 2013-present...selected as 2013 Top XI Championship player...USYS Washington Championship state title and regional participant...third place in 2013 Surf Cup...volunteer for Spokane Soccer Academy.







## ABBEY PORTER

Defender  
Skyline High School  
Sammamish, Wash.

### WHAT THEY'RE SAYING...

"Abbey Porter is a very effective and consistent soccer player. Because of her simple and thoughtful play, she is not someone you may notice right away but over the long haul of a season, is someone you realize you can't do without. In addition, she is a quality person, great leader and a fantastic teammate. She will be an excellent addition to an already strong team at WSU"

—Chance Fry, Director  
Eastside FC

"Washington State was an easy choice for me. Both my parents are alumni, and I grew up with crimson and grey and Bob Robertson blaring on the radio. I got my first WSU jersey when I was three. When I finally got the chance to visit, I fell in love with the beautiful campus, amazing people, and tight-knit college town. I was also very impressed by the team and rising soccer program. When it turned out that I could play the game I love at the school I always wanted to go to, I was elated. I cannot wait to get to WSU."

—Abbey Porter

### HIGH SCHOOL

Three-year letterwinner and four-year student-athlete for coach Don Braman...all-state, All-KingCo First Team in 2013 and Seattle Times all-area in 2013...member of Spartans' teams that captured KingCo titles from 2011-13 and back-to-back state championships in 2011 and 2012...National Honor Society and ASB athletic liaison.

### CLUB

Captain for Eastside FC in Bellevue, Wash., under coach Chance Fry...state championships in 2009, 2010 and 2012...won Northwest Champions League three-straight seasons, 2010-12...captured Surf Cup in 2012 and 2014...Far West Regional champions in 2014.





# JULIA RENEAU

Goalkeeper

Laurel Springs High School

Ojai, Calif.

## WHAT THEY'RE SAYING...

"Julia is determined individual that will not let anyone or anything stand in her way of success. She is one of the hardest working goalkeepers I have ever worked with."

—Nate Failing, Coach  
Pleasanton Rage

"As soon as I arrived on campus, I knew it was where I wanted to be. I love the close-knit Pullman community and school spirit. I was able to visit several other schools but after spending the day at WSU, seeing the facilities, talking with players, and touring the campus I immediately knew it was the right fit for me."

—Julia Reneau

## CLUB

Member of Pleasanton (Calif.) Rage in the ECNL...played for coach Tina Estrada...goalkeeper for 2013 Region IV ODP team and 2013 ODP Interregional Boca Raton event.







# SHAY WHIELDON

Midfield  
Upland High School  
Upland, Calif.

## WHAT THEY'RE SAYING...

"Shay Whieldon has a tremendous presence on the field, her size and athleticism allows her to be a great ball winner and she has the ability to spray the ball around with great accuracy. Her technical skills, along with her tactical awareness makes her someone who can not only help her team keep the ball, but can also break down defenses."

—John King, Head Coach  
Legends FC

"The moment I stepped onto the campus I knew this is where I belonged. Everything about the atmosphere screamed pride, strength, courage, success, unity and teamwork. My dream has always been to be a part of a competitive team and I know the academics and athletics will challenge me to be the best player and person I can be. I cannot wait to step on the campus and field as a cougar!"

—Shay Whieldon

## HIGH SCHOOL

Four-year letterwinner for coach and father Bo Whieldon...All-Baseline League and all-region selection...led team to league championship.

## CLUB

Member of Legends (Calif.) FC under the direction of coach John King...Surf Cup champion...national finalist.





## 2015 SIGNING CLASS

Abbey Porter — Sammamish, Wash.

Maegan O'Neill — Spokane, Wash.

Emma Dahline — Mill Creek, Wash.

Liz Griffith — Puyallup, Wash.

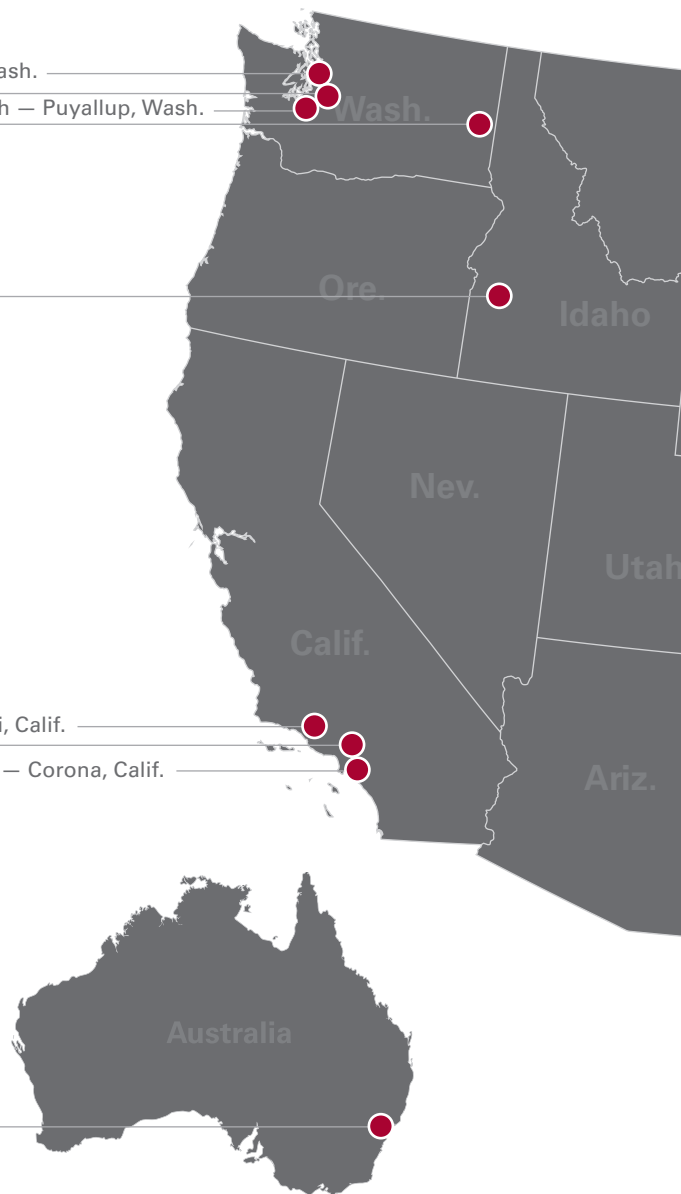
Grace Hancock — Boise, Idaho

Shay Whieldon — Upland, Calif.

Julia Reneau — Ojai, Calif.

Maddy Haro — Corona, Calif.

Tia Gavin — Narara, Australia







## 2015 NATIONAL SIGNING DAY

